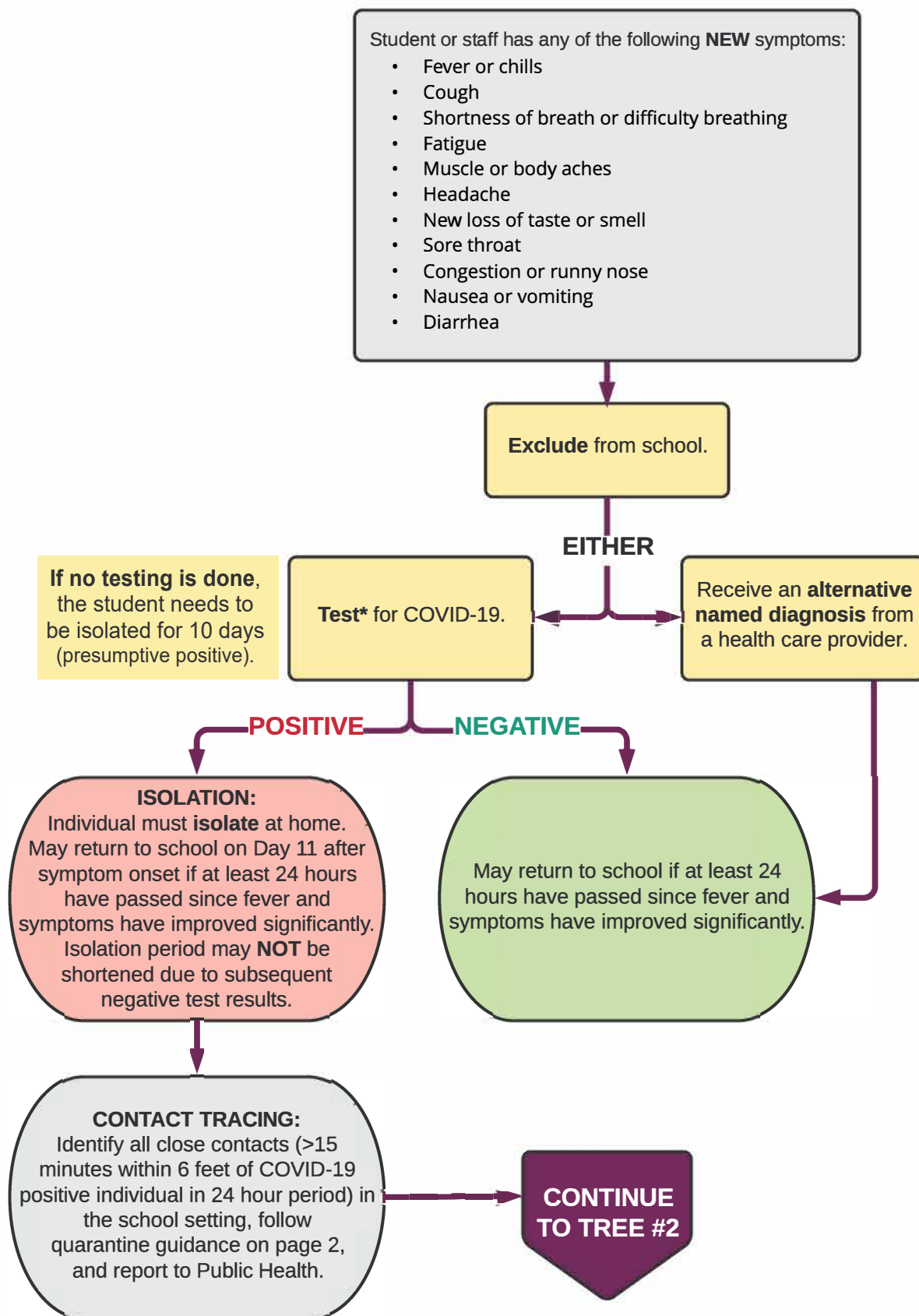


COVID-19 Symptom & Quarantine Decision Forest for K-12 Schools

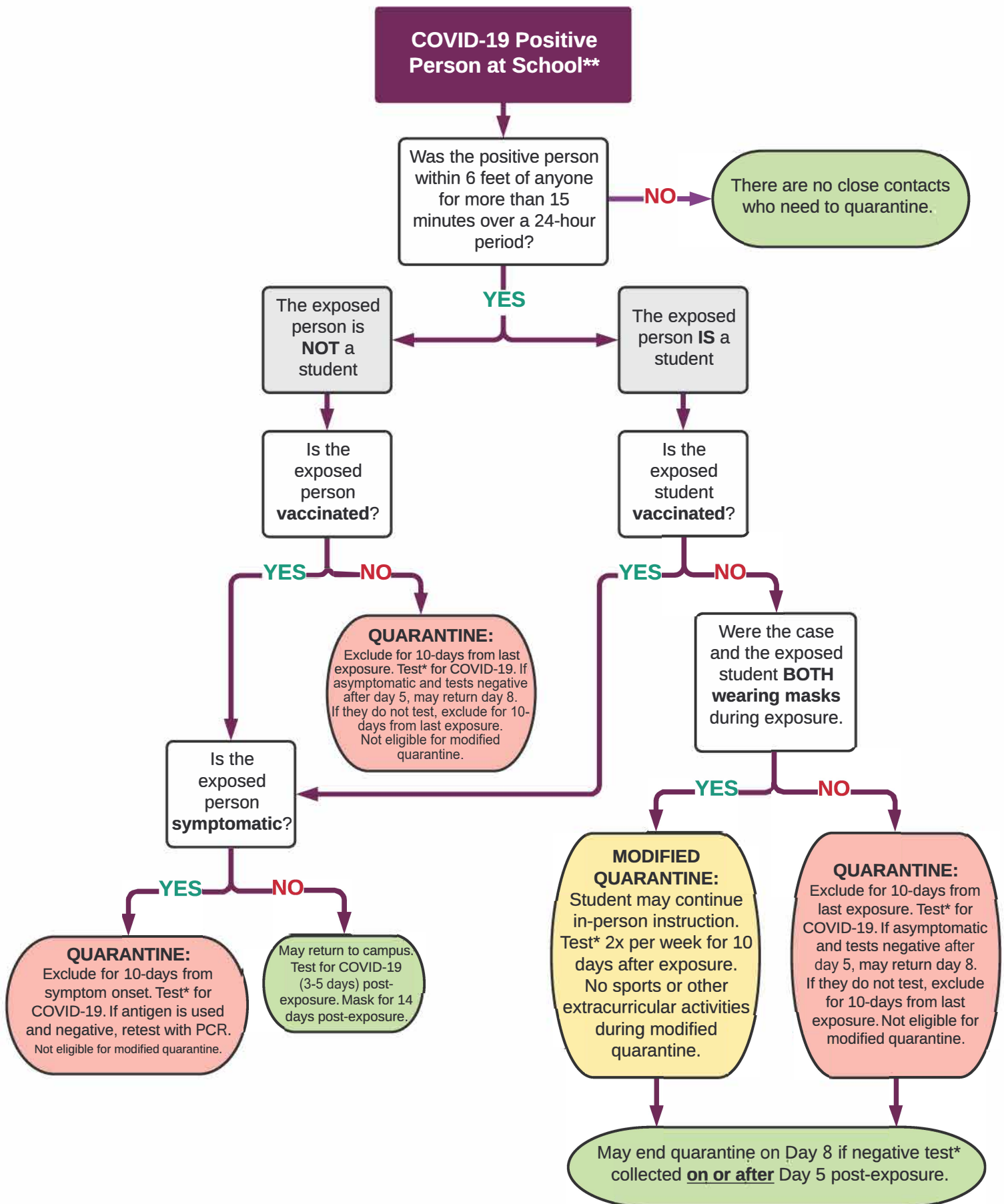
TREE #1: STUDENT OR STAFF WITH SYMPTOMS



* PCR or rapid antigen testing are acceptable testing methods. If antigen is negative, continue isolation and repeat with PCR testing.

** School setting in which students are supervised by school staff, including indoor or outdoor school settings and school buses.

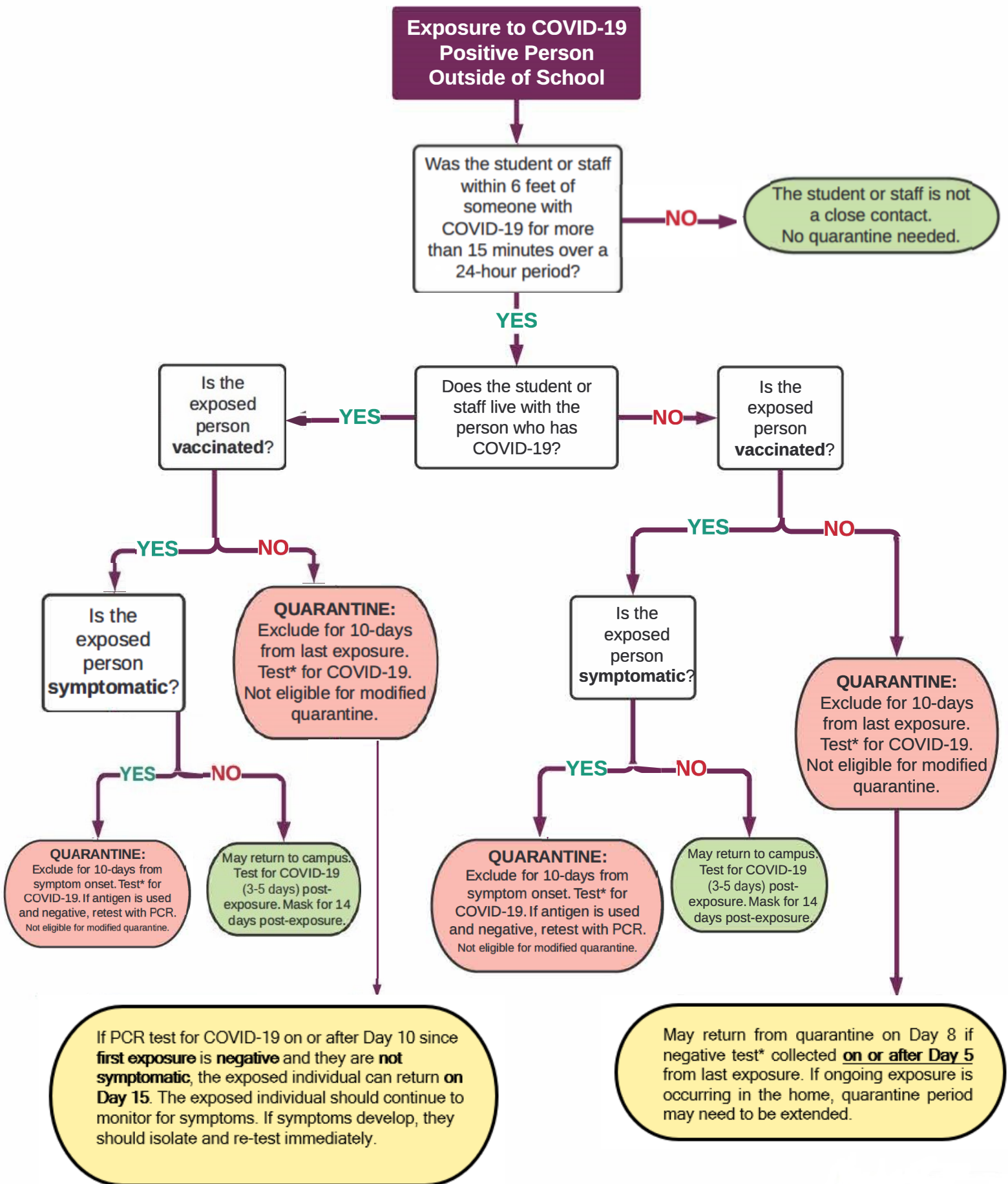
TREE #2: COVID-19 POSITIVE PERSON AT SCHOOL**



* PCR or rapid antigen testing are acceptable testing methods. If antigen is negative, continue isolation and repeat with PCR testing.

** School setting in which students are supervised by school staff, including indoor or outdoor school settings and school buses.

TREE #3: COVID-19 POSITIVE EXPOSURE OUTSIDE OF SCHOOL



* PCR or rapid antigen testing are acceptable testing methods. If antigen is negative, continue isolation and repeat with PCR testing.

** School setting in which students are supervised by school staff, including indoor or outdoor school settings and school buses.