

# COVID-19 Symptom & Quarantine Decision Forest for K-12 Schools

## TREE #1: STUDENT OR STAFF WITH SYMPTOMS

Student or staff has any of the following **NEW** symptoms:

- Fever or chills
- Cough
- Shortness of breath or difficulty breathing
- Fatigue
- Muscle or body aches
- Headache
- New loss of taste or smell
- Sore throat
- Congestion or runny nose
- Nausea or vomiting
- Diarrhea

**Exclude from school.**

**EITHER**

If no testing is done, the student needs to be isolated for 10 days (presumptive positive).

**Test\*** for COVID-19.

Receive an **alternative named diagnosis** from a health care provider.

**POSITIVE**

**NEGATIVE**

**ISOLATION:**  
Individual must **isolate** at home. May return to school on Day 11 after symptom onset if at least 24 hours have passed since fever and symptoms have improved significantly. Isolation period may **NOT** be shortened due to subsequent negative test results.

May return to school if at least 24 hours have passed since fever and symptoms have improved significantly.

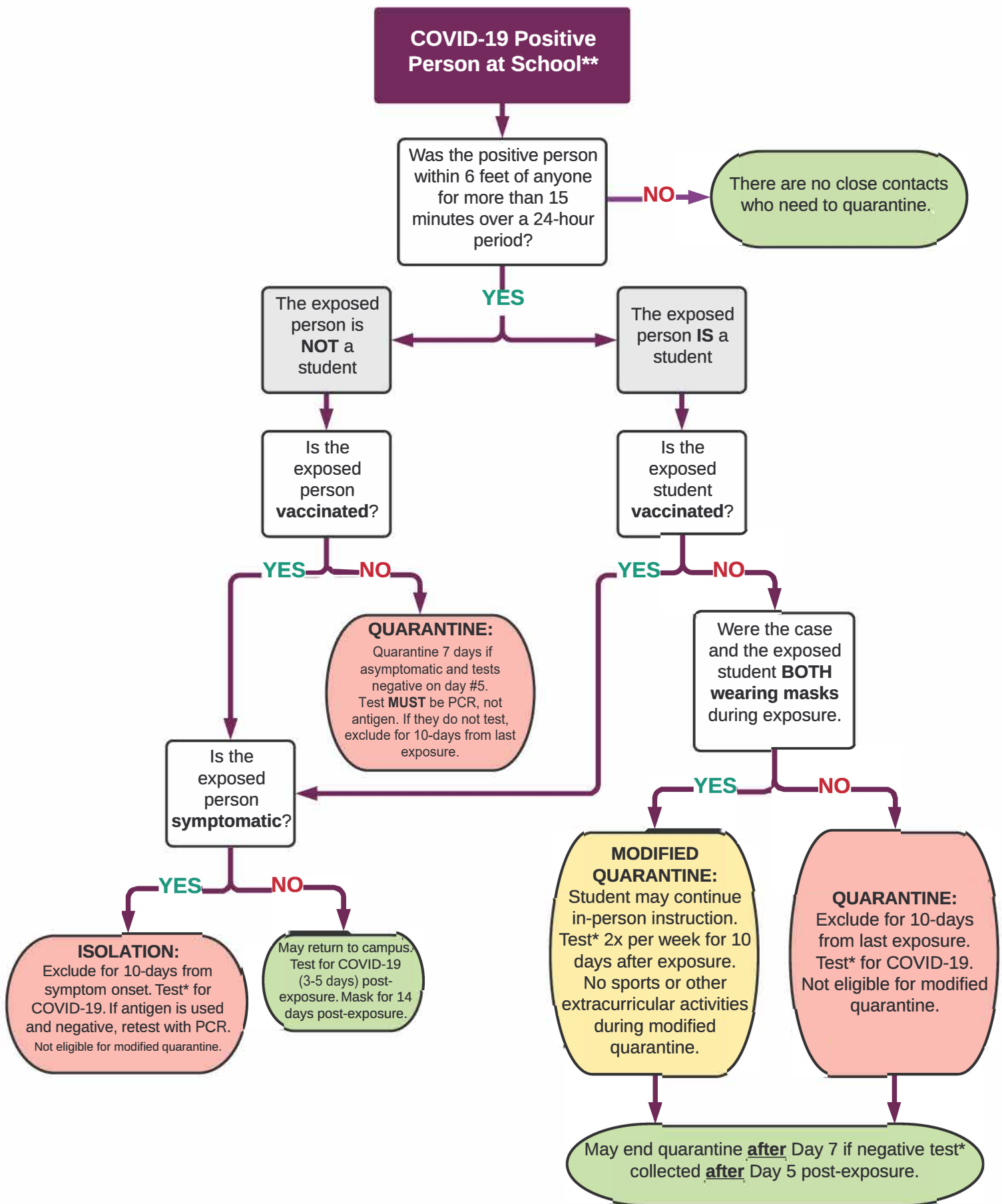
**CONTACT TRACING:**  
Identify all close contacts (>15 minutes within 6 feet of COVID-19 positive individual in 24 hour period) in the school setting, follow quarantine guidance on page 2, and report to Public Health.

**CONTINUE TO TREE #2**

\* PCR or rapid antigen testing are acceptable testing methods. If antigen is negative, continue isolation and repeat with PCR testing.

\*\* School setting in which students are supervised by school staff, including indoor or outdoor school settings and school buses. August 18, 2021

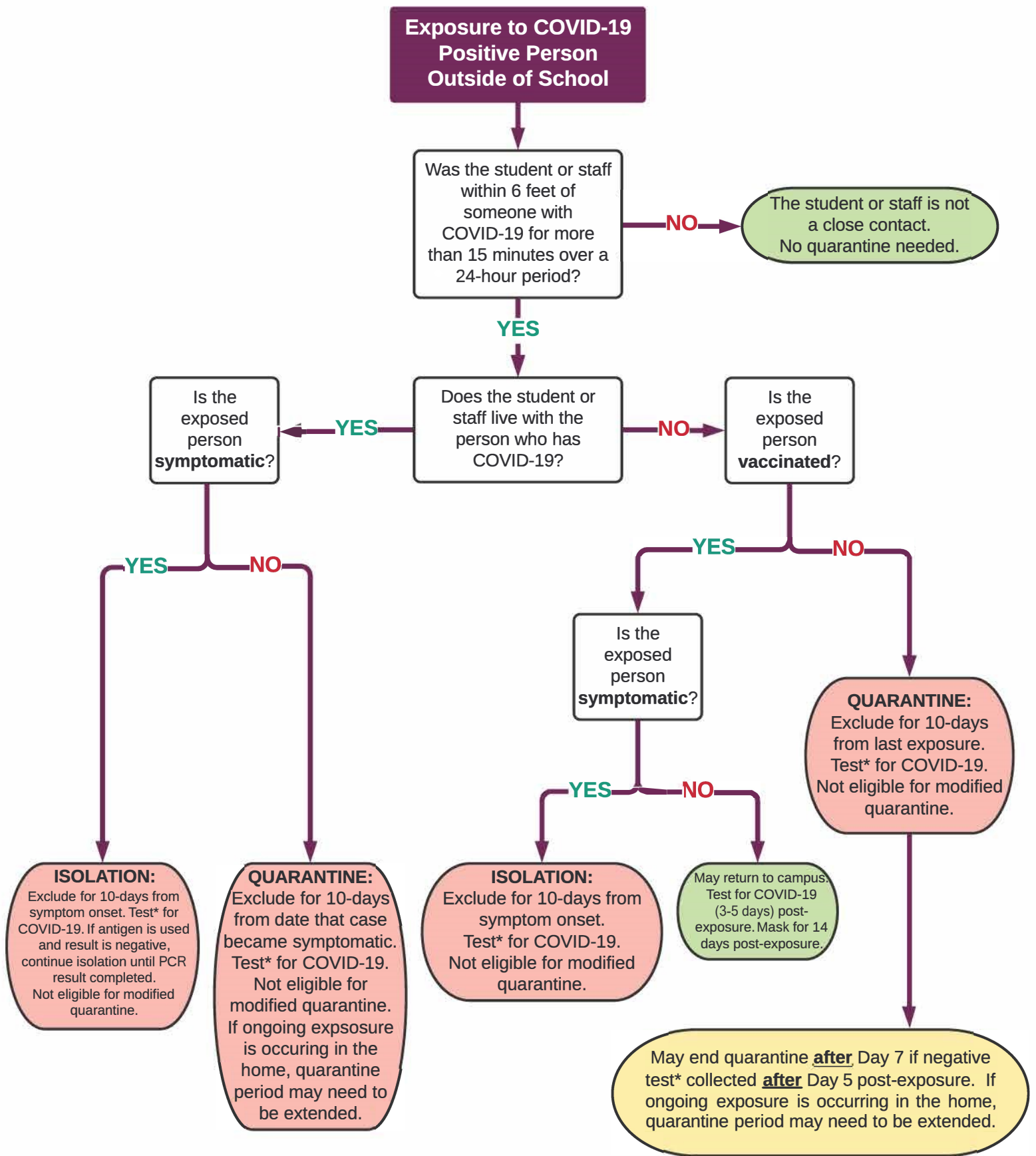
## TREE #2: COVID-19 POSITIVE PERSON AT SCHOOL\*\*



\* PCR or rapid antigen testing are acceptable testing methods. If antigen is negative, continue isolation and repeat with PCR testing.

\*\* School setting in which students are supervised by school staff, including indoor or outdoor school settings and school buses. August 18, 2021

# TREE #3: COVID-19 POSITIVE EXPOSURE OUTSIDE OF SCHOOL



\* PCR or rapid antigen testing are acceptable testing methods. If antigen is negative, continue isolation and repeat with PCR testing.

\*\* School setting in which students are supervised by school staff, including indoor or outdoor school settings and school buses. August 18, 2021